

IPA POLYSCHICHT

The coating to meet
the highest requirements



Over
50 Years
of Experience in
Chemical Construction



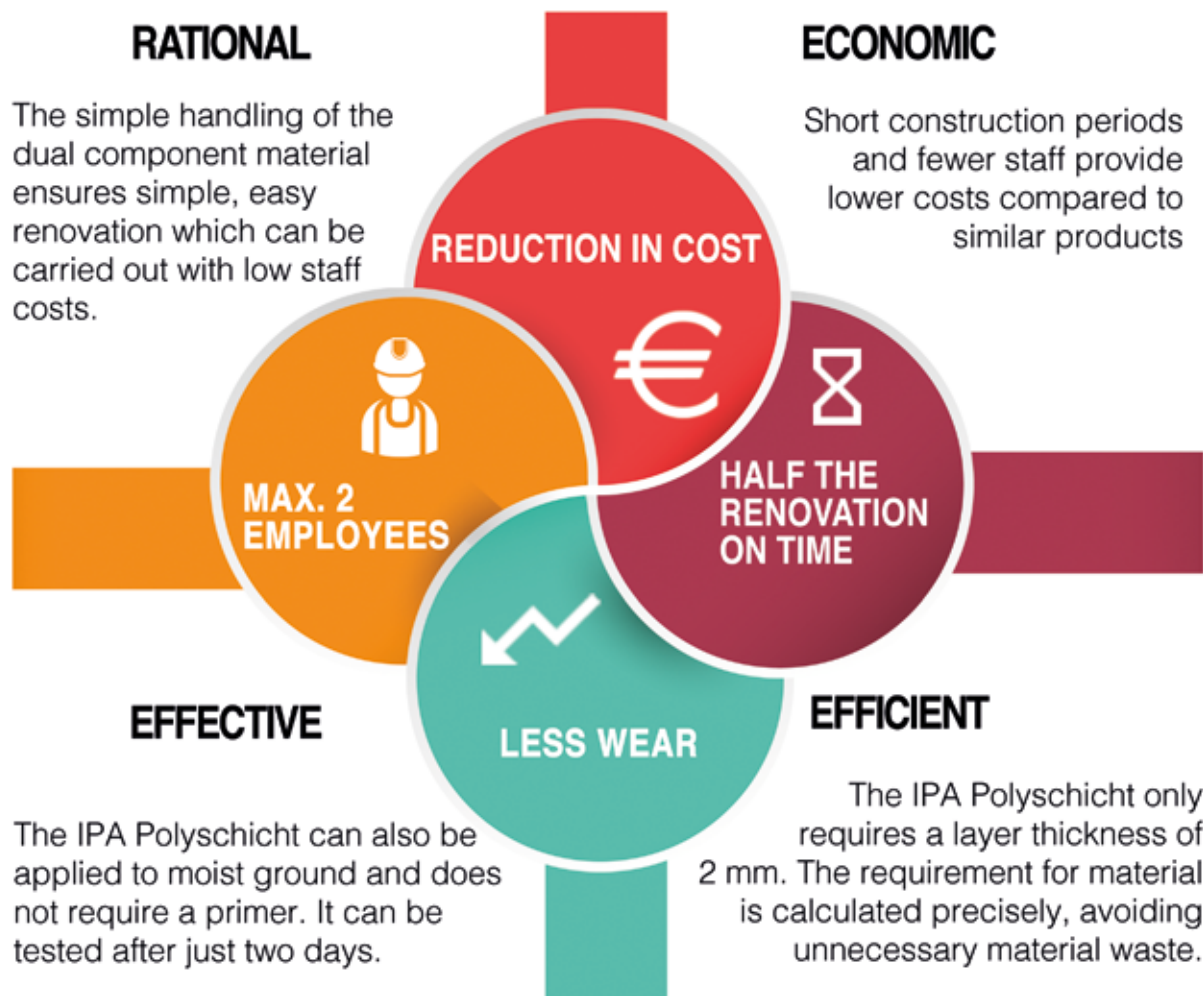
Best Quality
German
Engineering

IPA Polyschicht

The coating to meet the highest requirements

IPA Polyschicht is a plastic-modified silicate coating with the highest degree of chemical resistance and German Institute of Structural Engineering approval.

Separation systems, manhole pits, digestion towers, LAU systems, tankers, car washes etc. are renovated using IPA Polyschicht.



Properties

- vapour diffusive
- resistant to heat
- does not contain any volatile components
- resistant to pH values from pH 0 to pH14 and to biogenic sulphuric acid corrosion, heating oils, fuels, oils, fats, cleaning agents

Advantages

- no primer needed
- can be sprayed or painted on
- rapid hardening (6h at 20°C)
- ground only needs to be "visually dry", no discussions about residual moisture content
- can be used again after just a few hours
- does not need to be ventilated during hardening

IPA separator renovation

The system for extreme loads

Areas of use

Protection of the mineral ground against increased chemical loads up to pH 0 in petrol and fat separators, manhole pits, digestion towers, LAU systems, tankers etc.

Cleaning

For the intensive deep cleaning of the ground use IPA ÖkoCleaner, brush it and rinse it well. This application is possible with both cold and hot water using the high pressure process. Then remove all standing water.

Surface roughness compensation and coating

Make IPA Unimörtel Rapid up as a sludge and brush it into the ground. Then repair imperfections using the mortar made up in a plastic manner and where applicable prepare a coating.

Resistant protective coating programs

The carefully mixed IPA Polyschicht coating material is to be applied to the prepared ground in two stages using a painting, rolling or spraying process to a total thickness of 2 mm.



Fig. 01

After cleaning with IPA ÖkoCleaner



Fig. 02

After re-profiling with IPA Unimörtel Rapid



Fig. 03

After coating with IPA Polyschicht

IPA Polyschicht references

The best means for comparison



BASIN RENOVATION
Treatment plant, Calbe



MAIN CHAMBER RENOVATION
Rainwater retention basin, Birkenwerder



SEPARATOR COATING
AMG plant, Bodensee

IPA BAUCHEMISCHE PRODUKTE GMBH

Riedhof 5, D - 82544 Egling

+49 (0) 8171 / 99 90 60 0; info@ipa.de; www.ipa.de